

Hansfive®

3D Printer

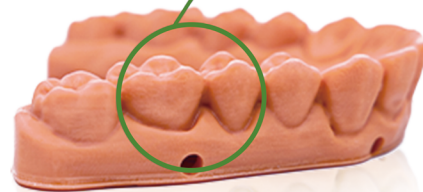
PM 200

Your ideal dental productivity tool

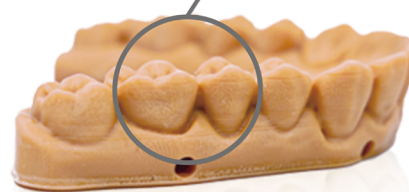


● Excellent print precision

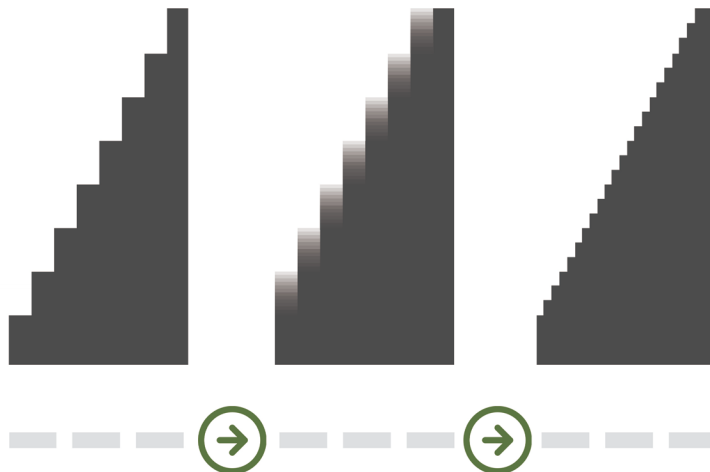
The PM 200 has a 4K printing resolution, and the printing precision can reach 25 microns. It also uses sub-pixel compensation algorithm to make the surface of the printed item smoother and improve the printing precision.



Printed by the PM 200

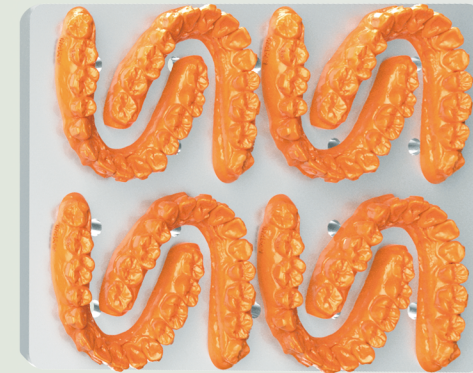


Printed by a Common printer



● Fast printing speed

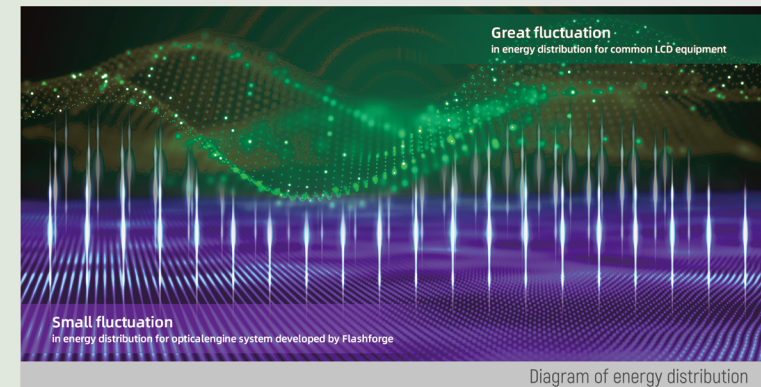
The PM 200 has a large build volume of 192*120*200mm, and a fast printing speed of up to 50mm/hour, which can print 7 dental arch models within 1 hour.



● Excellent printing stability

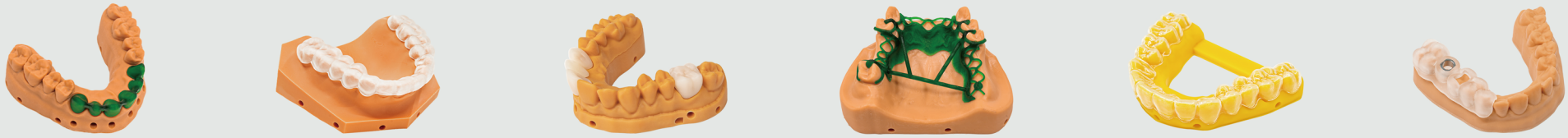
The PM 200 adopts industrial-grade dual linear guideway and ball screw to ensure precise and smooth operation of the unit and eliminate printing layers.

Equipped with a self-developed precision optical engine system, The PM 200 has a more efficient, uniform and stable light output, which makes the printing success rate higher.



● Wide range of applications

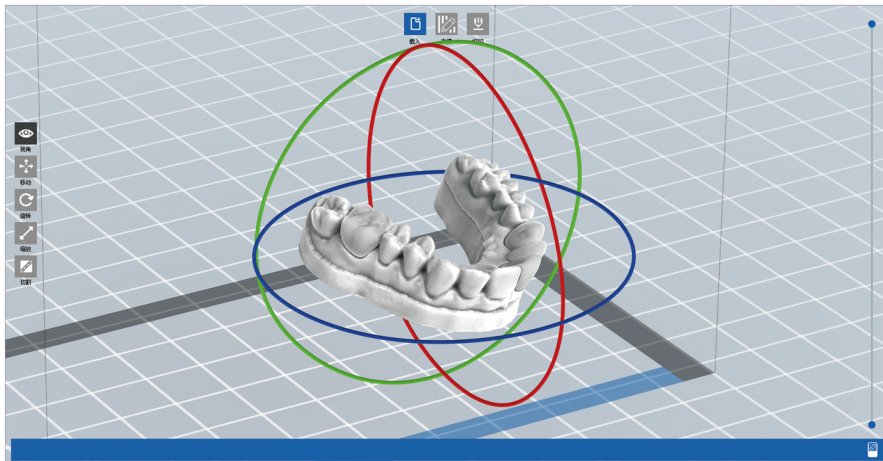
The PM 200 can be widely used in the printing of various dental applications such as surgical guides, trays, dental models, temporaries, denture base and more.



● Intelligent and professional software

The PM 200 has an intuitive software interface design, with many practical functions such as automatic restoration, one-button layout, automatic lay-flat, contour compensation, intelligent marking etc., which meets the usage habits of dental users.

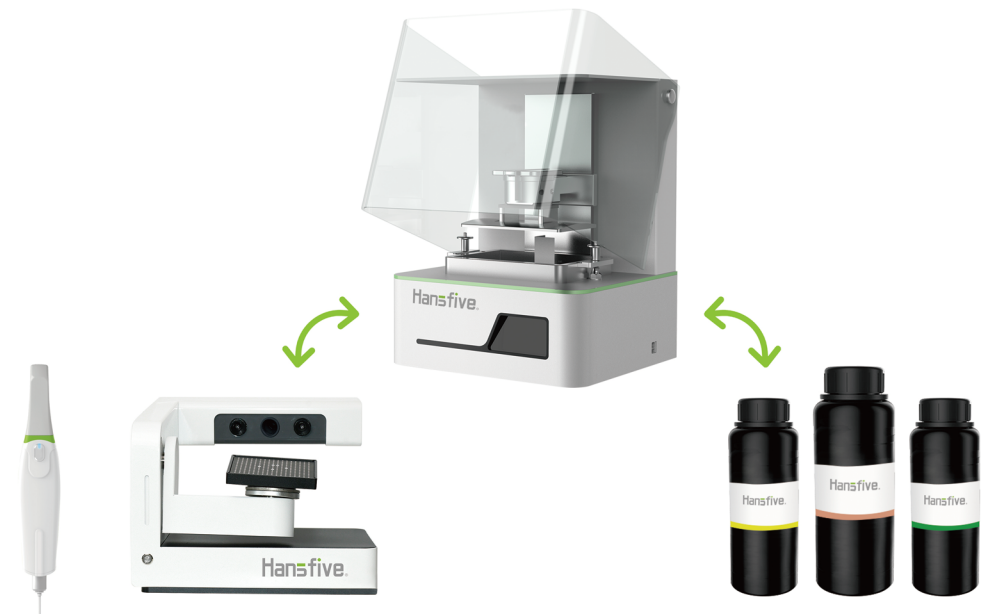
The software platform supports file import in various formats such as stl, obj, fdp, fpp, 3mf, slc, svgx, etc.



● Better compatibility

The PM 200 is compatible with common dental resin brands on the market, such as NextDent, DETAX, Dreve, dentona, etc.

And it forms a perfect dental digital ecosystem with Hansfive intraoral scanner, lab scanner and printing materials.





Technical Specifications

Model Name	PM 200
Print Speed	10-50 mm/h
Build Volume (W×D×H)	192*120*200 mm
Layer Thickness	0.025-0.2 mm (adjustable)
XY Resolution	0.05 mm
Light wavelength	405 nm
LED Screen	8.9-inch industrial-grade 4K black and white screen
Dimensions(W×D×H)	344mm x 311mm x 495mm
Power	120 w

PC Requirements

CPU	No special requirements
GPU	Support OpenGL 2.1 and above
RAM	2G or above
OS	Microsoft Windows® 10 Professional 64bit or above



 Hansfive (Hangzhou) Dental Technology Co.,Ltd
 17th Floor, NO.1199 West Wenyi Rd, Hangzhou, China
 www.hansfive.com
 + 86 400-099-8860
 hansfivedental@gmail.com



LinkedIn



Facebook



Instagram